

## Eastern VetPath telecytopath: Digital image cytology interpretation

### Service A: STAT digital cytology service

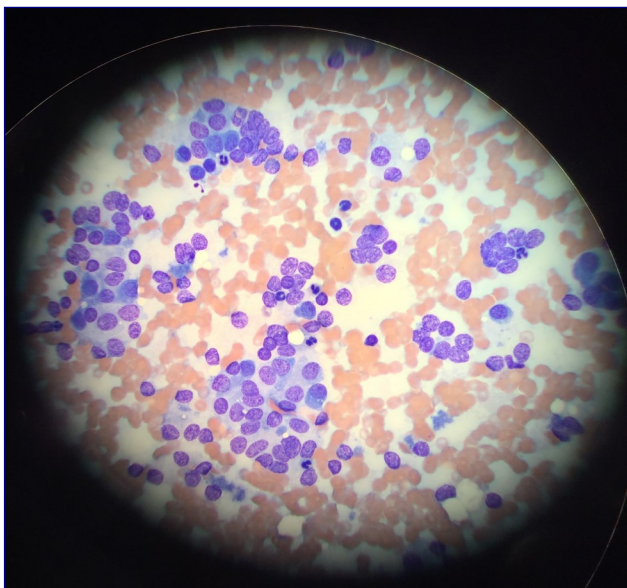
- Results within 2 hours, 8am-10pm, M-F (maybe longer late nights/weekends/holidays)
- Glass slides will be sent to lab to confirm the digital interpretation
- This service is ideal to facilitate same day therapy for sick patients (high-grade lymphoma, sepsis)
- **\$20.00**, in addition to routine cytology charges when slides are received

### Service B: Stand-alone digital cytology service

- Results same day that images are submitted; slides are not sent to lab for confirmation
- This service is an economical alternative to traditional cyto service, best for cutaneous/SQ lesions
- **\$32.00**, no additional fee

### Instructions:

1. Find an appropriate area of the cytologic specimen to photograph. Ideally, this should be a mono-layer of intact cells (see below).
2. Attach the adapter firmly to an eyepiece.
3. Place your phone on the adapter; shift your phone up/down and right/left to align the camera lens with the eyepiece.
4. Once a bright, circular area can be seen on the display screen of your camera, use the camera's **zoom** function to zero-in on the area of interest.
5. Email ~2-8 pictures of different fields at low, medium, and high-power magnifications (jpeg form, large to actual size) with a detailed description of the lesion and signalment of the patient to: [statcyto@easternvetpath.com](mailto:statcyto@easternvetpath.com)



Pre-zoom



Post-zoom

